

Participating Households

Total number of participating households = **103**

Assessments conducted between February 2009 and June 2009

<i>Representation by locality</i>		<i>Households</i>
<i>Suburb:</i>	<i>Katoomba</i>	<i>15</i>
	<i>Springwood</i>	<i>12</i>
	<i>Other suburbs</i>	<i>76</i>
<i>Postcode:</i>	<i>2780</i>	<i>26</i>
	<i>Other postcodes</i>	<i>77</i>
<i>LGA:</i>	<i>Blue Mountains</i>	<i>103</i>

Average Energy & Water Usage

Electricity and gas usage = **53.7 MJ/person/day**

(NSW average = 44.2 MJ/person/day, including electricity, natural gas and LPG, 2006-2007)*

Mains potable water usage = **147 litres/person/day**

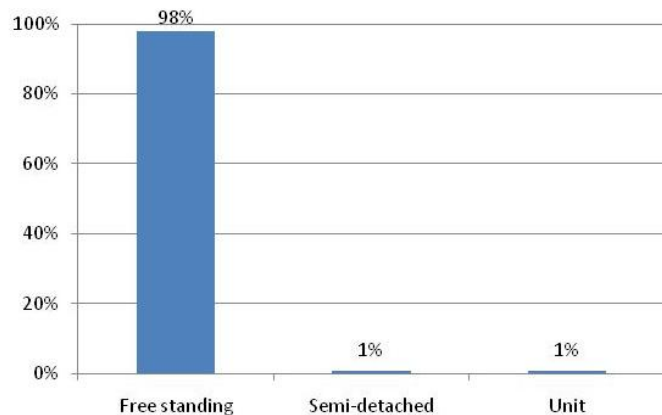
(NSW average = 221 litres/person/day, distributed water usage, 2004-2005)~

Household size = **2.6 people/household** (Australian average = 2.5)^

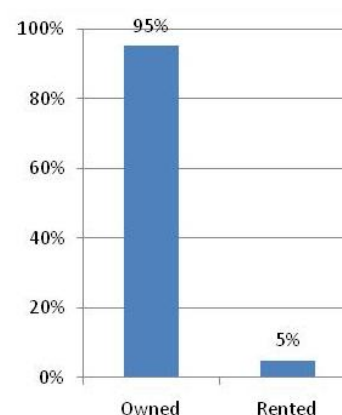
NABERS rating Median energy rating - **1.5 Stars (below average performer)****

Median water rating - **4 Stars (strong performer)****

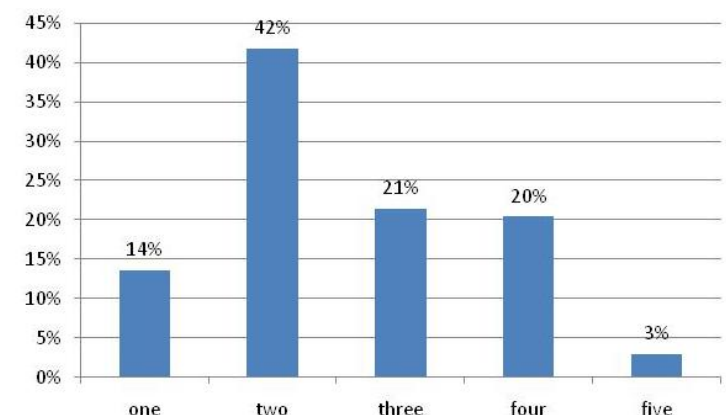
Type of dwellings



Occupancy status



Household size (number of people)



*abare energy update 2008, and ABS Australian Demographic Statistics (doc: 3101.0)

~ABS Water Account, Australia (doc: 4610.0)

^ABS Year Book Australia, 2008

** in some cases the NABERS and raw energy and water statistics may not correlate to each other as the NABERS rating is weighted against greenhouse emissions, household size and other factors.

Household Review Summary

90 households participated in the telephone review survey.

This represents **88% coverage** of participating households.

(Review target is to achieve coverage of 70%)

What was implemented?

Of the actions recommended, participating households report to have

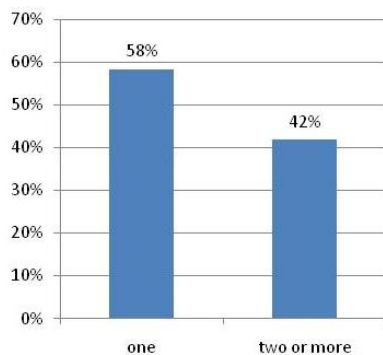
Implemented 54% of the actions

Investigated 22% of the actions

Not Implemented 17% of the actions

With the remaining 7% of actions deemed 'Not Relevant' for their household

Refrigeration



45% of households have taken simple action (by adjusting the fridge/freezer temperature)

38% of households with two or more refrigerators have consolidated units.

Stand-by Power

71% of households have taken action to reduce stand-by loads

Ceiling Insulation

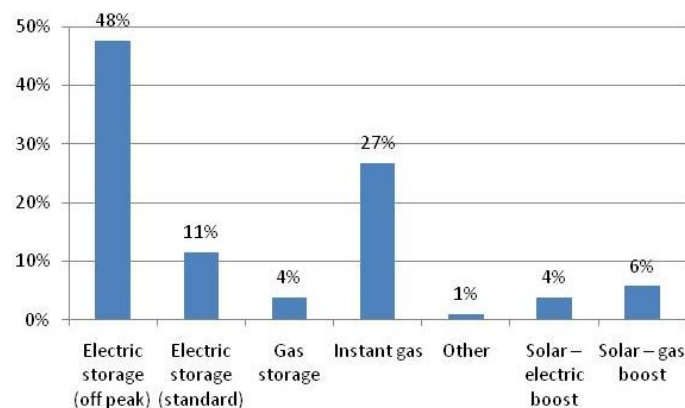
71% of households without ceiling insulation have now installed it

Lighting

71% of households with incandescent globes have upgraded to CFL's

44% of households with halogen globes have upgraded to more efficient units

Hot Water Systems



23% of households with electric hot water systems have upgraded to more efficient units (solar, etc).

Note: the reviews have been a great opportunity to update residents of these and other rebate opportunities.

Air Conditioning

Of the **47%** of households with air conditioners installed, **around half** have adjusted the temperature set-point. Significant uptake was also reported on issues including using the AC with fans and adjusting duct work.